

PERFECT FIT™

MERCER Fixture Series by Northwest LED

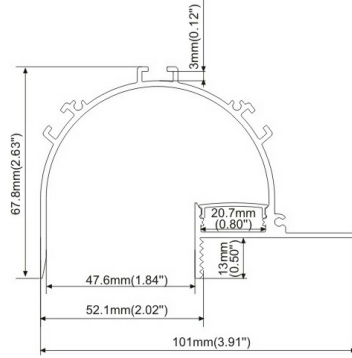
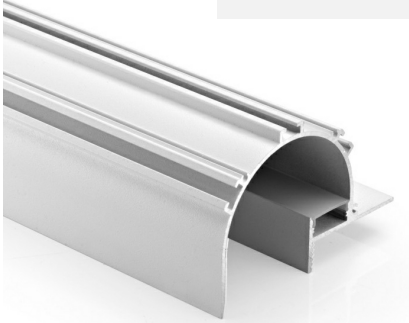
Job Name
Notes

Professional quality, custom LED light fixtures without the custom price!

The *Mercer Series* contains various specialty fixtures that allow you to create unique and elegant *indirect* lighting solutions for the home or office.

Mercer-WW

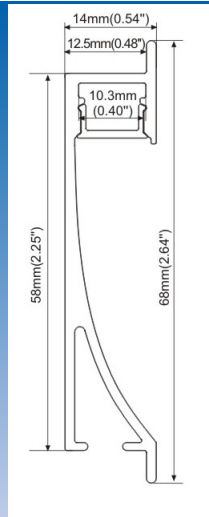
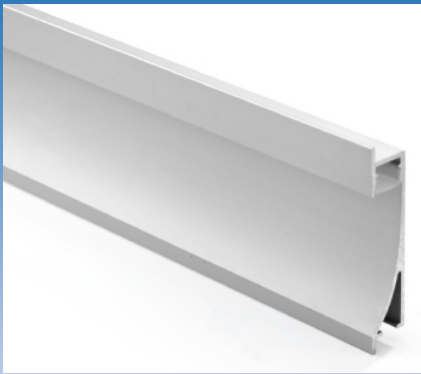
078 (Wall Wash)
White finish standard



Mercer-S pictured

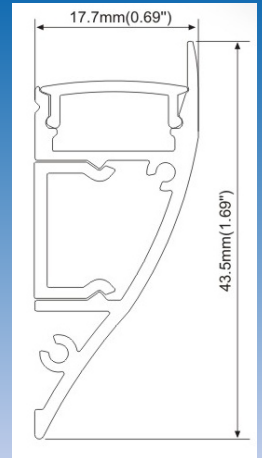
Mercer-I

023 (Indirect Recessed)
Not available in Warm Dim



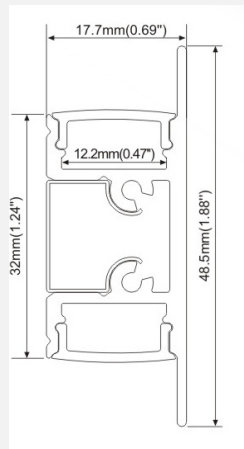
Mercer-C

062 (Crown Surface)



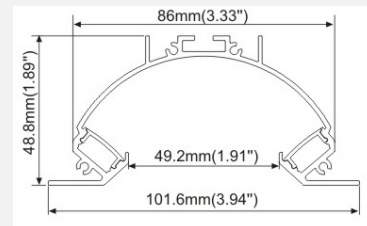
Mercer-S

050 (Sconce)



Mercer-HR

059 (Half-Round Recessed)





Mercer HR pictured

Features

- ETL certified fixtures conform to UL Std 2108 and NEC requirements.
- Color Rendering Index (CRI) of 95 or above. Brings out true colors
- Dimmable when powered with an approved dimmable driver. (sold separately)
- Custom fabricated in the USA in lengths from 6 to 192-inches. (Longer fixture assemblies available-contact us for details).
- Surface and Recessed styles available.
- 2-year warranty when powered with a Northwest LED approved driver.



Brightness Options	Voltage DC	Watts/ Ft. *	LEDs/ Ft.	Lumen/ Ft. *
Soft (SO)	12	1.5	18	130
Medium Bright (MB)	12/24	2.9	36	260
Extra Bright (XB)	12/24	4.4	36	400
Dual Bright (DB) **	24	5.9	72	700
Warm Dim (WD) **	24	2.9	68	275

LED Color Options	
27-18 k	Warm Dim (2700k dims to 1800k) 24V only
2400k	Warm White (MB only)
2700 k	Incandescent White
3000 k	Halogen White
4000 k	Natural White

* Please note the wattage and lumens are doubled for models that require two LED inserts. (Mercer 059 and 050)
 ** Warm Dim & Dual Bright available in 24 VDC only.



Ordering Information

PERFECT FIT™ Mercer fixture models come standard in "Silver" finish* with a single 2 foot long lead wire and mounting clips. Please specify the housing style, color temperature, brightness level and finished length for each fixture. Fixtures may *optionally* be ordered with extra long leads, or in custom configurations (mitered corners etc.) Finish options other than silver generally require additional lead time. Please call for availability and pricing. *except Mercer-WW 078, which comes standard in white finish

**Examples: LinF24-059f-WD-78
 LinF12-023f-MB-27k-98-L10**

Model/Voltage	Lens	Brightness	Color Temp	Fixture Length In Inches	Options
LinF12/24-059 LinF12/24-050	f = frosted	MB=Medium Bright (x2) XB=Extra Bright (x2)	24k=2400k (MB only) 27k=2700k 30k=3000k 40k=4000k	6 (minimum) to 192 (maximum)	L=lead length (2' std.)
		WD=Warm Dim (x2)	(2700k dims to 1800k)		
LinF12/24-023	f	SO=Soft MB, XB	24k (MB only) 27k, 30k, 40k	6 to 192	L
LinF12/24-062	f	SO, MB, XB	24k (MB only) 27k, 30k, 40k	6 to 192	L
		WD	(27k-18k)		
LinF12/24-078	f	XB, DB	27k, 30k, 40k	6 to 192	L
		WD	(27k-18k)		