

PERFECT FIT™

LINEAR LIGHTING by Northwest LED



Professional quality, custom LED light fixtures without the custom price!

These long lasting, energy efficient fixtures are fully dimmable and are custom made for an exact fit in your project! Fixtures can be ordered in any length from 4-inches to 16 feet.

Numerous housing, brightness, light color and lens options allow for the perfect solution for your under cabinet and accent lighting needs.



Cove Lighting in 2700K Color

Advantages

- Miniature sized fixtures are easily hidden under or inside cabinets.
- Under cabinet lighting does not require a large lighting valance.
- Custom length fixtures allows for uniform lighting with no hot spots.
- High CRI fixtures produce light that brings out the true colors and sparkle of granite and other premium surfaces.
- Hardwired fixtures do not require special cables or connectors.
- Cooler operating temperatures than traditional lighting.



Under Cabinet Installation using Recessed Micro in Bright

Features

- Custom fabricated in the USA in lengths from 4-inches to 16 feet.
- ETL listed: Complies with all NEC electrical code requirements.
- Fast and clean installation. Comes standard with 3M mounting tape.
- Dimmable drivers are controlled with standard dimmer switches & wiring.
- Fixtures may be ordered with specified lead length or with spacer leads between fixtures to light corner cabinets from a single wall feed.
- 12/24 VDC LED drivers can be located farther from fixtures than comparable AC drivers.

Applications

- Under Cabinet Lighting
- In Cabinet Lighting
- Cove and Toe Kick
- Closet and Pantry
- Stairs and Steps
- Display Case and Shelving

Northwest LED

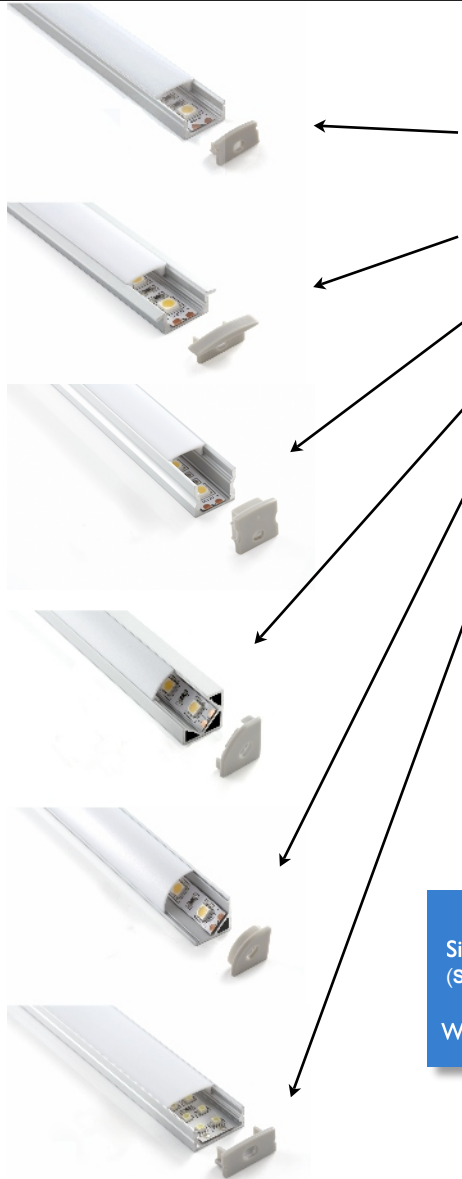
Linear LED lighting



PERFECT FIT

Core Series

Models and applications (see individual cut sheets for full product details)



Fixture style	Model / Voltage	Dimensions	Typical Uses
Micro (Most popular)	LinF12-M LinF24-M	3/8" H x 1 1/16" W	Under cabinet, in cabinet, cove, toe kick
Recessed Micro	LinF12-R LinF24-R	3/8" H x 1 1/16" W 15/16" (flange width) 1/4" (inset depth)	Under cabinet (frame less cabinets), shelf lighting. Recesses into router cut grooves
Single	LinF12-S LinF24-S	5/8" H x 1 1/16" W	Suitable for all uses - deeper housing minimizes LED imaging (dot pattern).
Corner	LinF12-C LinF24-C	3/4" x 3/4"	Display cases, in cabinet, pantry
Micro Corner	LinF12-K LinF24-K	5/8" x 5/8"	In cabinet (vertical or horizontal), under cabinet (backsplash highlighting)
Double wide Micro	LinF24-D	3/8" H x 15/16" W	Closets, pantries, low ceiling room lighting

Finish Options			
Silver (Std.)		Bronze	
White		Black	

Diffuser Lens Options

Standard Lenses

Frosted (f) - produces a softer, slightly warmer diffused light and is preferred with reflective surfaces to minimize glare and reflection.

Prismatic (p) - produces a brighter, slightly whiter light and is preferred where maximum light output is desired and the fixture is hidden from normal view.

Specialty Lenses (select models only)

Focus Lens (x) - allows the light to be "focused" into a narrow 30 degree beam for wall wash effects.

Opal (o) - heavily frosted for maximum light diffusion (reduces light output).

Color Temperature and Brightness Options

LED Color options

2400 k	Very Warm White (MB only)
2700 k	Incandescent White
3000 k	Halogen White
4000 k	Natural White
RGB/RGB+W	Color Adjustable

Brightness Options	Voltage DC	Watts/ Ft.	LEDs/ Ft.	Lumen/ Ft.
Soft (SO)	12	1.5	18	130
Standard (ST)	12	2	9	180
Medium Bright (MB)	12/24	2.9	36	260
Bright (BR)	12	4	18	350
Extra Bright (XB)	12/24	4.4	36	400
Dual Bright (DB) (Wide models Only)	24	5.9	36	700

Northwest LED

Linear LED lighting



Intertek

Conforms to UL Std 2108